

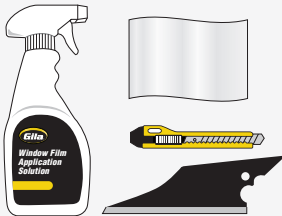


**TOOLS NEEDED:**  
(SOLD SEPARATELY)

We recommend using the  
**GILA® Complete Window Film  
Application Kit**  
(Item #50146241 / Model #FS600)

- GILA® Window Tint Application Solution
- Low-lint cloth
- Utility knife (for cutting film)
- Squeegee or squeegee card

Included in the GILA Complete Window Tint Application Kit



**HELPFUL HINTS:**

- Before starting your DIY Window Tint project, refer to [www.gilafilms.com](http://www.gilafilms.com) for comprehensive and updated support material including frequently asked questions, product data and installation videos.
- The GILA® application solution will serve as a lubricant for the squeegee during glass cleaning, application, and future cleaning after installation.
- Change the utility knife blade after trimming the tint/film for each window.
- Start with the smallest flat window first to become more comfortable handling the film.
- Apply film in a shaded, well-lit, dust-free environment.
- Apply film when temperature is below 100°F, but also when temperatures will be above 40°F for at least three days.
- Handle the film carefully to prevent creasing.
- Installation is easier with two people.
- Rinse fingertips clean and keep them wet when handling the film to avoid leaving fingerprints on the surface of the film during installation.

# How to:

## INSTALL AUTOMOTIVE ADHESIVE WINDOW TINT

### INSTRUCTIONS FOR SIDE ROLL DOWN WINDOWS

#### ADDITIONAL ITEMS NEEDED

- Single-edged razor blade (for cleaning glass)
- Tape measure
- Transparent tape

#### TINT LAWS

Most states permit some tinted windows. Laws differ from state to state regarding window tint light transmission and reflectance percentages.

**BEFORE** installing **ANY** window film on **ANY** vehicle, check with your state police and comply with applicable tint laws. The manufacturer and retailer assume no responsibility for the misuse, illegal or improper application of window film. Visit the following website to review your state's laws: [www.iwfa.com/state-law-charts](http://www.iwfa.com/state-law-charts)

#### WHERE NOT TO APPLY

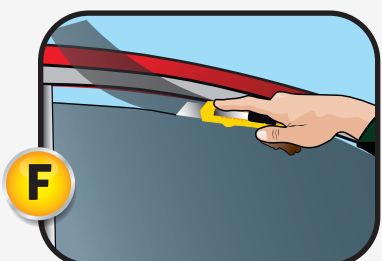
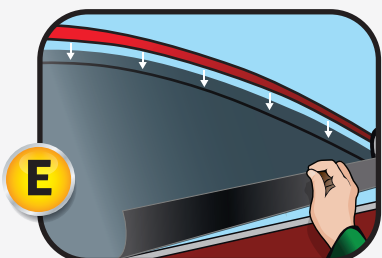
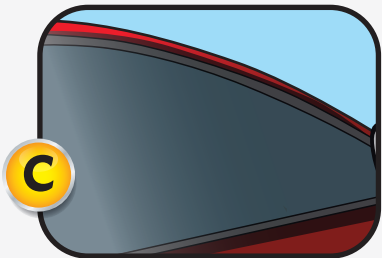
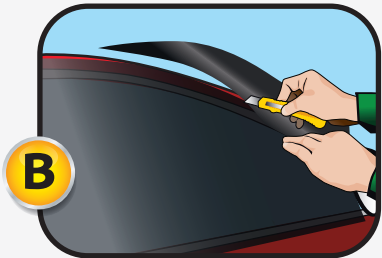
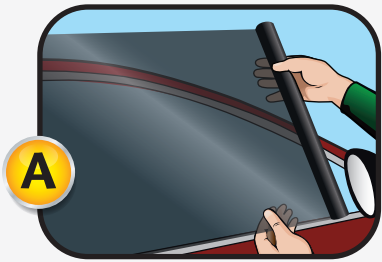
- DO NOT use automotive window films for any application other than automotive glass.
- DO NOT apply film to glass containing holes, or to frosted, etched, leaded, cracked, deeply scratched, flawed or otherwise defective glass.
- DO NOT apply film to Plexiglas, plastic or acrylic windows.
- Some newer automobiles may have plastic windows in certain locations; DO NOT apply window film to these special windows
- DO NOT apply to the front windshield.

#### CAUTION

- Dark tinting may reduce visibility during poor lighting conditions. Use extra care during these conditions.
- Use caution when handling sharp objects
- Once your installation is complete, remove any excess Gila Application Solution that may have reached areas surrounding your window by simply wiping dry with a cloth or towel.



## APPLICATION | AUTOMOTIVE SIDE ROLL DOWN WINDOW ADHESIVE WINDOW TINT



### 1. CLEAN THE WINDOW THOROUGHLY

The cleaner the glass, the better the finished application will look.

- DO NOT use household glass cleaners, vinegar or ammonia to clean the glass immediately prior to film application.
- Spray the solution on the inside and outside surface of the window.
- Carefully use a razor blade to scrape away dirt or residue from the glass.  
**CAUTION: Do not use razor scraper or any sharp tools on the inside surfaces of glass with printed electrical wires such as defroster or antenna wires.**
- Be sure to wipe down all border gaskets where dirt may be trapped.
- Re-spray and clean both surfaces of the glass on the inside and outside surfaces of the window.
- Use a squeegee to dry the surface.

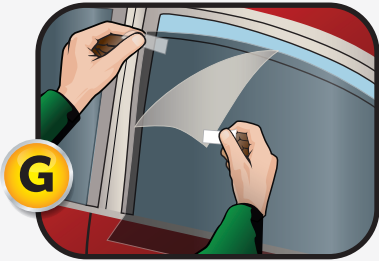
### 2. TRIM THE TINT

- Measure your window and cut a piece of film large enough to cover the window.
- Identify the liner side of the film. The liner is rolled to the outside during manufacturing. To double-check, rub the film against itself. The 'sticky' side is the film; the 'slick' side is the liner.
- Wet the outside of the window with application solution then roll the film onto the exterior of the glass with the liner side of the film facing out (final installation will be done on the interior). (FIGURE A)
- Trim away the excess film roll. (FIGURE B)
- Position the film so that the straight bottom edge extends about ¼" to ½" below the top of the inside gasket. (FIGURE C)
- Wet the outside of the film with application solution.
- Squeegee gently down the film to temporarily hold it in place for trimming.
- Use the utility knife to trim the vertical edges first. (FIGURE D)  
**NOTE: When using a utility knife on glass always use very light pressure and a very low cutting angle to avoid glass damage. Always tear excess film away from you.**
- Before trimming the top, open the door and gently lift the bottom edge of the film from the glass. Do not remove the film entirely from the glass. Then reach inside and roll down the window about 2 inches. (FIGURE E)
- Using the top of the window as your blade's guide, trim the film to the edge of the glass. (FIGURE F)



## APPLICATION | AUTOMOTIVE SIDE ROLL DOWN WINDOW ADHESIVE WINDOW TINT

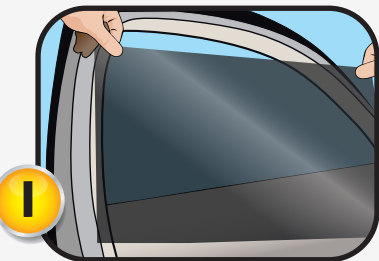
### 3. REMOVING THE CLEAR LINER



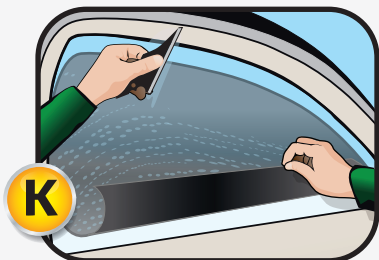
- With the film still on the exterior side of the glass, place one piece of transparent tape on each side of the top corner of the film, half of the tape on the film, half extending over the corner edge.
- Press the two pieces of tape firmly together, and then quickly peel them apart to separate the liner from the film and to expose the adhesive. (FIGURE G)
- Remove the liner while spraying the newly exposed adhesive thoroughly with the application solution. (FIGURE H)
- Once the liner is fully removed, prevent the film from touching itself.
- Leave the film on the exterior side glass as you move to the next step.



### 4. APPLYING THE TINT



- Spray the inside of the window generously with application solution.
- Wet your fingers with application solution, then carefully lift the film from the top of outside of the glass.
- Place the wet adhesive side of the film against the wet inside glass along the top of the window. (FIGURE I)
- Before you position the film on the glass, fold the bottom edge so that the adhesive does not touch the door and pick up any dirt. (FIGURE J)
- Slide the film into place, leaving about 1/8" to 1/4" gap at the top on the roll up window.
- Spray the film with application solution.
- Squeegee the top of the film firmly to the glass. Do not squeegee the bottom portion of the film yet. (FIGURE K)
- Roll up the window.
- To ensure that the bottom of the glass is clean, re-spray with the application solution and then squeegee the glass.
- Wet the window again then unfold the film at the bottom of the window.
- Slip the bottom of the film under the window gasket.
- Using the edge of the squeegee, pull back the window gasket so that the film will slide easily behind it. With your fingers and the squeegee as guides, run the film under the gasket completely, being careful not to crease it.
- Once the film is tucked under the gasket, squeegee firmly downward until all the water is pushed out from under the film. Push any bubbles that remain under the film to the nearest edge. (FIGURE L)
- To finish, wrap the low-lint cloth around the hard edge of the squeegee, and firmly push the application solution down to the nearest edge. The cloth will absorb any excess solution and keep it from creeping back under the film.





## ADDITIONAL INFORMATION

---

### POST YOUR RESULTS!

Great work. You have successfully applied your window tint. Please share your photos with us on our Facebook page, [facebook.com/ gilafilms.com](https://facebook.com/gilafilms.com).

### CURING TIME

The film fully “cures” over the next week to 10 days. Dry, sunny weather speeds curing; wet, cold weather prolongs it. During curing, the film may initially look hazy or cloudy; this effect will disappear with time and/or exposure to heat (i.e. the sun or a hair dryer).

**Do NOT roll down your windows during this curing period.**

### CORRECTING MISTAKES

You may notice imperfections such as air bubbles or debris between the film and the glass. The film's adhesive allow you to peel the film away from the glass, address the imperfection, and re-apply for up to 24 hours from the time of installation. Simply peel the affected area of film away from the glass, spray with application solution, and use your squeegee or knife to remove any debris or bubbles. Re-spray under the film with application solution and re-apply to the glass. Once applied, re-spray the outer surface of the film and re-squeegee.

### CLEANING AND CARE

Wait at least 3 days after installation before cleaning your windows. Clean the film with application solution and a low-lint cloth or paper towel. It is safe to use ammonia-based cleaners if the cleaner sits on the film for no more than two minutes.

### REMOVAL

The adhesive makes removal easy and clean. Removal is as easy as peeling the film away from the glass. However, if your film has been installed for several years or it doesn't peel off the glass easily, please use the GILA® Window Film Remover Kit (Item #FR200, sold separately) to facilitate removal. Additional information about this removal kit can be found at [www.gilafilms.com](http://www.gilafilms.com).

### LIMITED WARRANTY

Eastman Performance Films, LLC warrants GILA® window films against manufacturing defects for a period of two years from the date of original purchase with the exception of Heat Shield™ Elite automotive products that are warranted for a three (3) year period from the date of original purchase. If any product fails to conform to the foregoing limited warranty, and the purchaser submits a valid warranty claim during the warranty period set forth above, the purchaser may be eligible for replacement product at no charge. Original proof of purchase and an explanation of the manufacturing defect will be required to substantiate any warranty claim. It is therefore recommended that the purchaser retain the sales receipt. In addition, we reserve the right to request samples of the defective window film to substantiate any warranty claim. For complete warranty information or to submit a claim, please visit the Warranty section at [www.gilafilms.com](http://www.gilafilms.com).

### CUSTOMER SUPPORT

**Customer Service:**

1.800.528.4481  
Available 24 hours,  
7 days a week

**Email:** [gila@eastman.com](mailto:gila@eastman.com)

**Web:** [www.gilafilms.com](http://www.gilafilms.com)

**Mail:** Eastman Performance Films, LLC  
575 Maryville Centre Dr.  
Saint Louis, MO 63141  
Attn: Gila Window Films