



TOOLS NEEDED:

(SOLD SEPARATELY)

We recommend using the
**GILA® Complete Window Film
Application Kit**
(Item #50146305 / Model #RTK500)

- GILA® Window Film Application Solution
- Low-lint cloth
- Utility knife (for cutting film)
- Squeegee or squeegee card

Included in the GILA Complete Window Film Application Kit



HELPFUL HINTS:

- Before starting your DIY Project, refer to www.gilafilms.com for comprehensive and updated support material including frequently asked questions, product data and installation videos.
- The GILA® application solution will serve as a lubricant for the squeegee during glass cleaning, application, and future cleaning after installation.
- Use smaller pieces of extra film to practice before your first time installing.
- Apply the film to cool glass, when it is not facing direct sunlight.
- Apply film in a well-lit, dust-free environment.
- While it is safe to apply film year-round, we do not recommend applying film when the temperature is below freezing (32°F).
- Handle the film carefully to help prevent creasing.
- Installation is easier with two people.
- Rinse fingertips clean and keep them wet when handling the film to help avoid leaving fingerprints on the surface of the film during installation.

Installation Instructions

ARCHITECTURAL WINDOW FILMS

HEAT CONTROL WINDOW FILMS

ADDITIONAL ITEMS NEEDED

- Single-edged razor blade (for cleaning glass)
- Tape measure or ruler
- Transparent tape
- Scissors

CAUTION! Use caution when handling sharp objects

BEFORE YOU BEGIN

INTENDED USE

Gila architectural Heat Control window film should only be applied as directed:

- Apply to the **INSIDE** surface of standard 1/8" glass panes. This includes single, dual, removable, storm panes, all window shapes such as patio and French doors, and half-rounds.
- Apply to the **INSIDE** surface of exterior removable storm panes.

WHERE NOT TO APPLY

- **DO NOT** apply any architectural window films to motor vehicle windows. Visit www.gilafilms.com for information on products designed for automotive applications.
- **DO NOT** apply film to glass containing holes, or frosted, etched, leaded, cracked, deeply scratched, flawed or otherwise defective glass.
- **DO NOT** apply film to glass that is more than 40 years old.
- **DO NOT** apply film to materials other than glass, including plastic or plexiglass surfaces.
- **DO NOT** apply film to triple pane windows.
- **DO NOT** apply the Gila Heat Control 3-in-1 (Item # 50167211 & 50167279) to standard clear, dual pane windows with a non-solar control low-e coating (commonly manufactured between 1970-1995).



APPLICATION | HEAT CONTROL WINDOW FILMS

1. CLEAN THE WINDOW THOROUGHLY

The cleaner the glass, the better the finished application will look.

- DO NOT use household glass cleaner, vinegar or ammonia to clean the glass immediately prior to film application.
- Spray the application solution on the inside surface of the window.
- Carefully use a razor blade to scrape away dirt, paint, or residue from the glass.
- Use special care cleaning the corners.
- Re-spray the window then squeegee downward across the entire window.
- Wipe off accumulated dirt from the window gasket with a soft cloth.
- If possible, clean the outside of the window for best clarity.
- Use a squeegee to dry the surface.

HINT

- Greasy or smoke-covered windows can be cleaned first with glass cleaner then rinsed thoroughly with application solution.
- Apply film to cool shaded windows when glass temperature is between 45-90°F.
- For best results, do not apply in direct sunlight or freezing weather.

2. MEASURE AND CUT FILM

- Carefully measure your window before cutting. (FIGURE A)
- Unroll the film on a clean, flat surface. (FIGURE B)
- Using scissors, cut the film at least an inch larger than the glass on all four sides. (FIGURE C)
- The excess will be trimmed once film is applied.

HINT

- Try to use at least one of the factory edges.
- Work in a dust-free area.
- Turn off fans.

3. IDENTIFY THE CLEAR LINER

- Leaving the film on a clean, flat surface, select one corner of the film and attach two small pieces of transparent tape (3-4 inches) to each side of the film – one on the film and one on the liner.
- Leave some tape hanging over the corner of the film (about 1 inch) on both sides.
- Press the two pieces of tape firmly together, then quickly pull them apart to begin separating the clear liner away from the film at the corner only. (FIGURE D)
- Spray application solution between the liner and the film as you separate the film from the liner at this corner.
- Leave the tape in place and move on to the next step.

HINT

- Usually, the liner is on the outside surface of the film roll.
- You may want to fold the ends of the tape over themselves to keep the two pieces of tape from sticking to each other

4. WET WINDOW AND FILM

- Lightly spray the application solution onto the inside surface of the window and both sides of the film. This helps reduce film curl and static electricity.

HINT

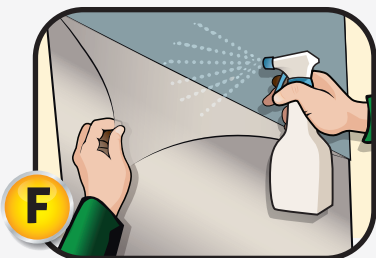
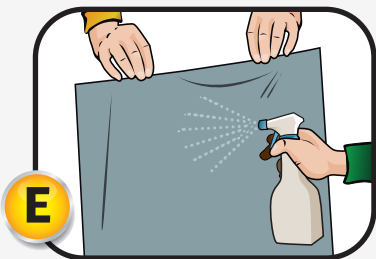
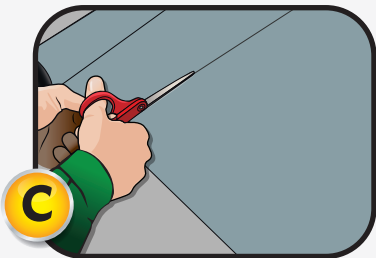
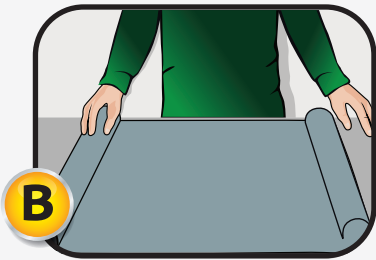
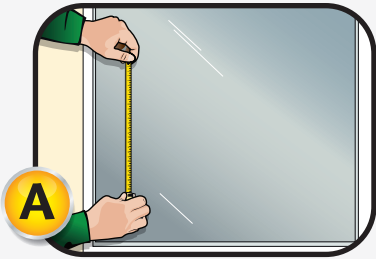
- Have a helper hold the film by the edges while you spray. (FIGURE E)
- Flip the film over and repeat on the other side.

5. REMOVE THE CLEAR LINER

- Peel the two strips of tape apart to release the liner from the corner.
- As you continue to pull away the liner, spray the newly exposed adhesive side of the film with the application solution until the clear liner is removed and the adhesive side of the film side is completely saturated. (FIGURE F)
- Try to keep the film from touching itself.

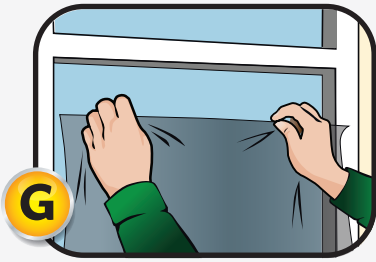
HINT

- Have a helper hold the film while you peel the clear liner away and spray the newly exposed side of the film.
- Handle the film very carefully to help prevent creasing.





APPLICATION | HEAT CONTROL WINDOW FILMS

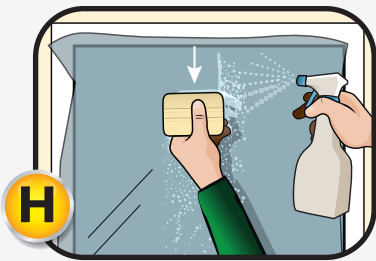


6. APPLY THE FILM TO THE GLASS

- Hold the film so that the newly exposed adhesive side of the film is facing the window and apply to the glass. (FIGURE G)
- Use your hands to smooth the film out and position it so that the excess 1" of film is overlapping the window on all four sides.

HINT

- If you are using a factory edge of film, line that up to the window edge.

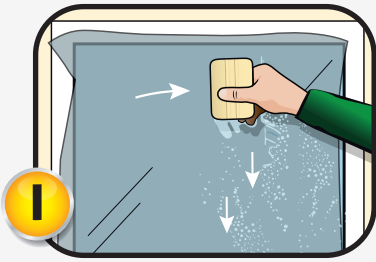


7. SMOOTH THE FILM

- Spray the entire surface of film with the application solution.
- Firmly squeegee the centerline of the film from top to bottom to set it in place. (FIGURE H)
- Begin smoothing out the film, starting at the top of the window.
- Squeegee from the center to the right side and work downward, leaving a 1-2" perimeter around the edges unsqueegeed. Repeat this process for the left side. (FIGURE I)
- Wrap the squeegee card included in the Gila Complete Window Film Application Kit with a low-lint cloth.
- Squeegee along all the edges, paying special attention to corners.

HINT

- If "fingers", or longer, larger bubbles, appear along any edge, wrap your squeegee with a low-lint cloth and carefully push the "fingers" toward the edge of the film. The cloth will absorb the excess water.

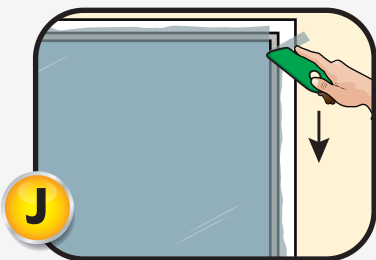


8. TRIM THE FILM

- Remove the safety cap of the green film-cutting tool included in the Gila Complete Window Film Application Kit.
CAUTION! Use caution when handling sharp objects.
- Place the blade at any corner of the window and begin cutting away excess film, moving to the opposite corner, using the window border as a guide. (FIGURE J)
- When you are several inches away from the next corner, stop, and firmly place the blade in that corner and trim back to meet where you stopped.
- Trim the remaining sides of the window the same way.

HINT

- As you trim, apply light pressure to the glass and firm pressure towards the outside edge of the window.



9. SQUEEGEE DRY

- Rewet the newly applied film and squeegee from the center to the right side, working your way from the top to bottom.
- Repeat this process for the left side.
- Press firmly to remove all the water so that the film can cure clearly.
- If air bubbles are present, squeegee them out. Any remaining small water bubbles should evaporate as the film cures.

HINT

- As mentioned in our hints for step 7, if "fingers", or longer, larger bubbles, appear along any edge, wrap your squeegee with a low-lint cloth and carefully push the fingers toward the edge of the film. The cloth will absorb the excess water.



ADDITIONAL INFORMATION

CUSTOMER SUPPORT

Customer Service:

1.800.528.4481
Available 24 hours,
7 days a week

Email: gila@eastman.com

Web: www.gilafilms.com

Mail: Eastman Performance Films, LLC
575 Maryville Centre Dr.
Saint Louis, MO 63141
Attn: Gila Window Films

POST YOUR RESULTS!

Great work. You have successfully applied your window film. Please share your photos with us on our Facebook page, facebook.com/gilafilms.com.

CURING TIME

The film fully “cures” over the next week to 10 days. Dry, sunny weather speeds curing; wet, cold weather prolongs it. During curing, the film may initially look hazy or cloudy; this effect will disappear with time and/or exposure to heat (i.e. the sun or a hair dryer).

CORRECTING IMPERFECTIONS

You may notice imperfections such as air bubbles or debris between the film and the glass. The film’s adhesive allows you to peel the film away from the glass, address the imperfection, and re-apply for up to 24 hours from time of installation. Simply peel the affected area from the film away from the glass, spray the film and glass with application solution, and use your squeegee or utility knife to remove any debris or bubbles. Once applied, re-spray the outer surface of the film and re-squeegee.

CLEANING AND CARE

Wait at least 3 days after installation before cleaning your windows. Clean the film with application solution and a low-lint cloth or paper towel. It is safe to use ammonia-based cleaners if the cleaner sits on the film for no more than two minutes.

REMOVAL

Removal is as easy as peeling the film away from the glass. However, if your film has been installed for several years or it doesn’t peel off the glass easily, please use the GILA® Window Film Remover Kit (Item #FR200, sold separately) to facilitate removal. Additional information about this removal kit can be found at www.gilafilms.com.

FOR WINDOWS LARGER THAN FILM SIZE

To cover larger windows, you may need to seam the film, as you would wallpaper. To obtain a perfect butt seam, vertically overlap two sides, then use a ruler as a straight edge to guide your knife as you cut through the center of both layers of film. After cutting the seam line, peel the loose sheet of film from the top, then lift the edge and slide the other waste piece from underneath. Rewet the glass, lay down the film, rewet the film, then squeegee from top to bottom in a slow vertical motion. A week after installation, we suggest you waterproof the seam with a coat of clear fingernail polish.

LIMITED WARRANTY

Eastman Performance Films, LLC warrants GILA® window films against manufacturing defects for a period of two years from the date of original purchase with the exception of Heat Shield™ Elite automotive products that are warranted for a three (3) year period from the date of original purchase. If any product fails to conform to the foregoing limited warranty, and the purchaser submits a valid warranty claim during the warranty period set forth above, the purchaser may be eligible for replacement product at no charge. Original proof of purchase and an explanation of the manufacturing defect will be required to substantiate any warranty claim. It is therefore recommended that the purchaser retain the sales receipt. In addition, we reserve the right to request samples of the defective window film to substantiate any warranty claim. For complete warranty information or to submit a claim, please visit the Warranty section at www.gilafilms.com.